

VEGATRONIC 1000

INTERMITTENT VERTICAL FORM, FILL & SEAL MACHINE



MAIN FEATURES

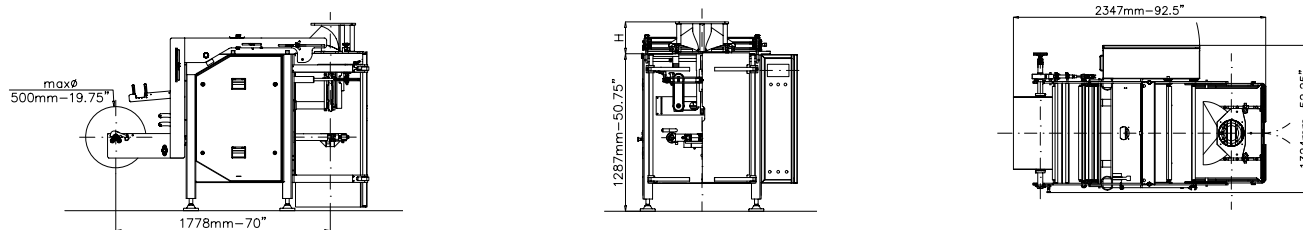
- 1 High-quality entry-level VFFS
- 2 Maximum versatility
- 3 Large film width capability

BENEFITS

- 1 Lowest cost of ownership and lowest cost per pack
- 2 Wide range of pack styles (pillow, BB, Quattro, Flexcan, Easypack, Shark pouch), seal options (different hang-holes,TD zipper etc.) and films (laminate, LDPE, paper etc.)
- 3 Wide range of pack dimensions and weights

IMA Ilapak's Vegatronic 1000 is a robust intermittent machine. High-quality, entry-level bagger capable to run a variety of pack styles, sizes and weights in dry or wet applications.

TECHNICAL DATA



Machine Speed	80 cpm
Wrapping Materials	Heat sealable materials (lamine, co-extruded, recyclable, etc.), polyethylene
Electronic Platform	Omron PLC, Allen Bradley PLC*, Siemens PLC*
Program Memory	40 programs
HMI	Colour TFT 6" touch screen, Allen Bradley*, Siemens*
Power Requirement	AC 400 V \pm 5%, 3 phase, neutral, 50/60 Hz, 6.7 kW, 10 A
Compressed Air	up to 125 l/min at 5 bar (72.5 psi), up to 225 l/min at 5 bar (72.5 psi) for LDPE
Electrical cabinet	Right-hand version, left-hand version* or remote cabinet*
Machine dimensions (W x D x H)	1324 x 2347 x 1287 mm (52.25 x 92.5 x 50.75")
Machine finishing	Electrostatic epoxy powder coating, stainless steel*
Machine Weight	800 kg (1765 lb)
BAG DIMENSIONS	
Max. width	380 mm (15"), 370 mm (14.5") for LDPE
Min. width	50 mm (2")
Max. length**	380 mm (15")
FILM REEL DIMENSIONS	
Max. width	780 mm (30.75"), 830 mm (32.75")*
Max. outer diameter	500 mm (19.75")
Core diameter	76 mm (3"), 152 mm (6")*

* optional

** greater length feasible on request